

2011.9.20-21
ヤマセ研究会(弘前)

DS³ ——更なるダウンスケーリング(3) ——

余偉明 (Weiming Sha)、東北大・理



DS³ ~ Down-Scaling Simulation System

<http://wind.gp.tohoku.ac.jp/>

Initial & lateral boundary data

- global/meso data
- SST data, etc



Main Frame

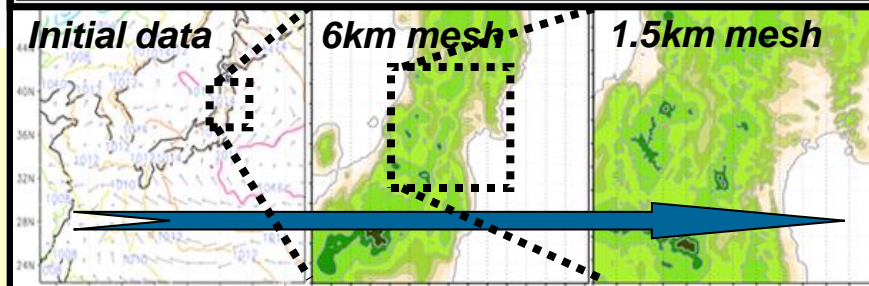
Numerical Models:

1. JMA-NHM (K.Saito, et al., 2006)
2. CFD-model/SIMPLERgo (W.Sha, 2008)

Initial data

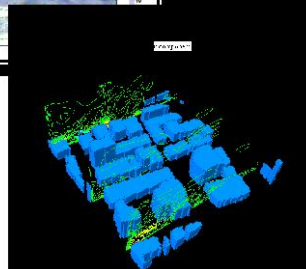
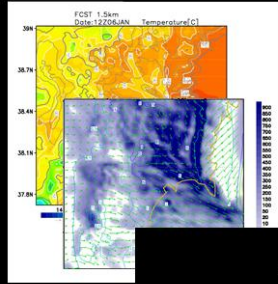
6km mesh

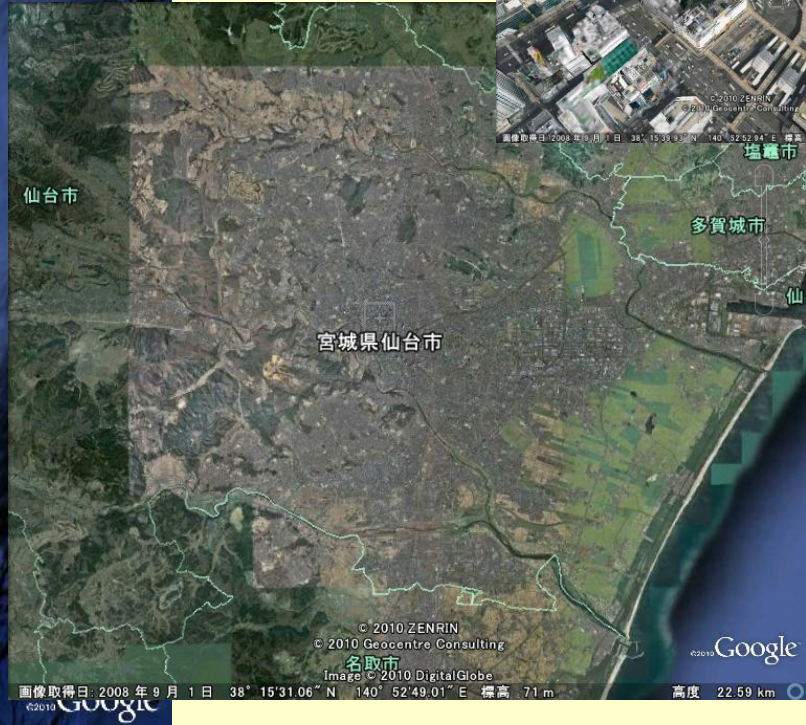
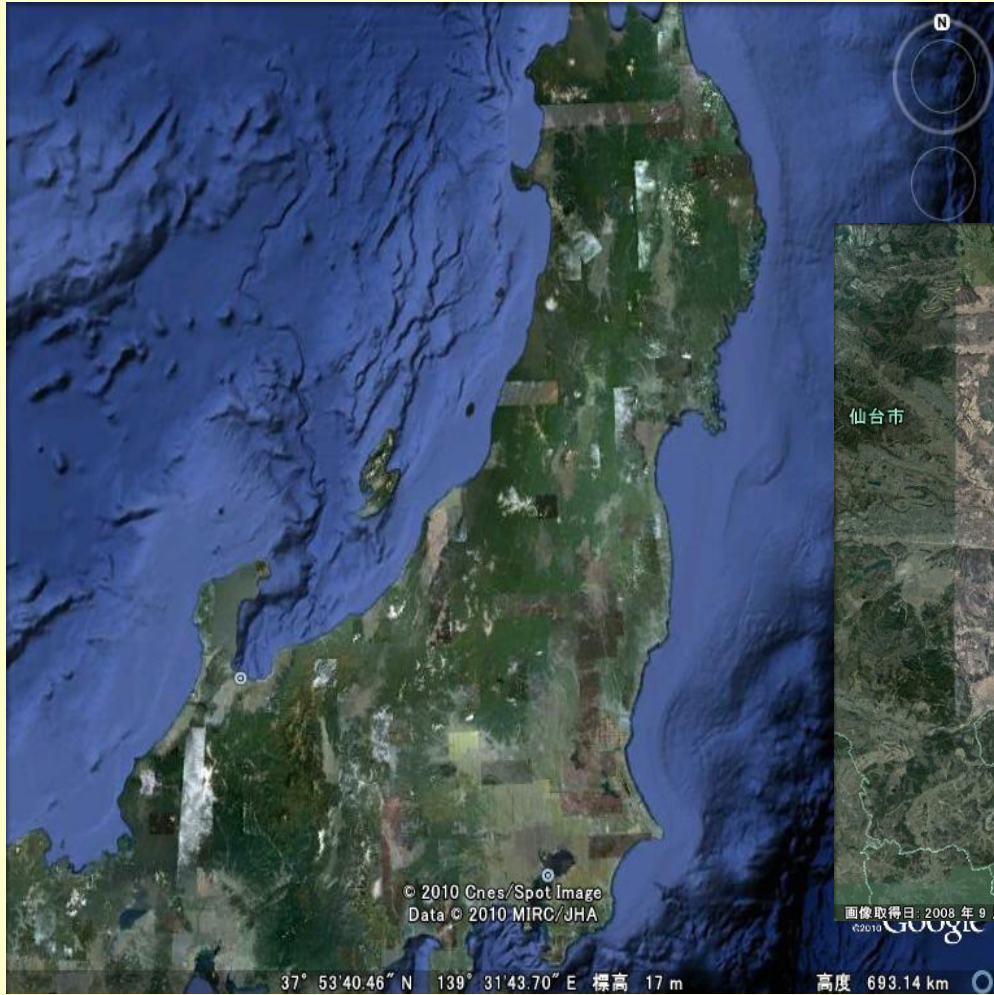
1.5km mesh



Various forecasts

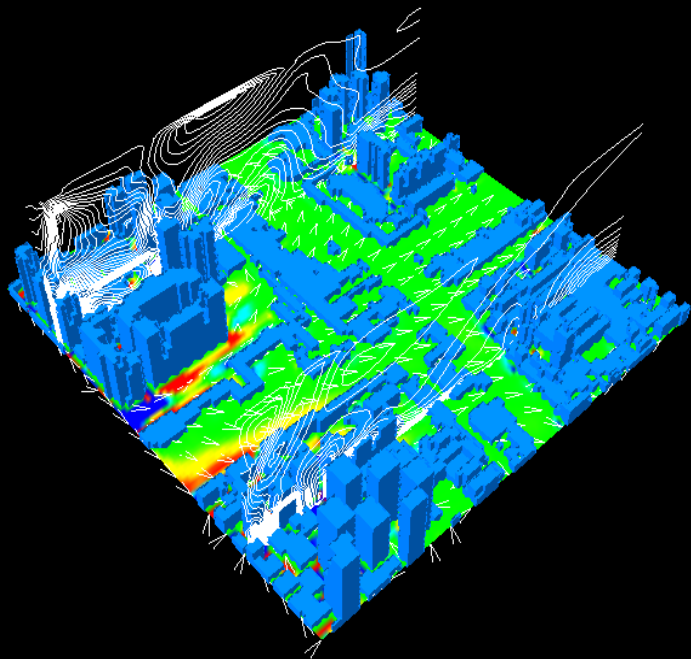
- Temp.
- Wind
- precip.
- • • etc



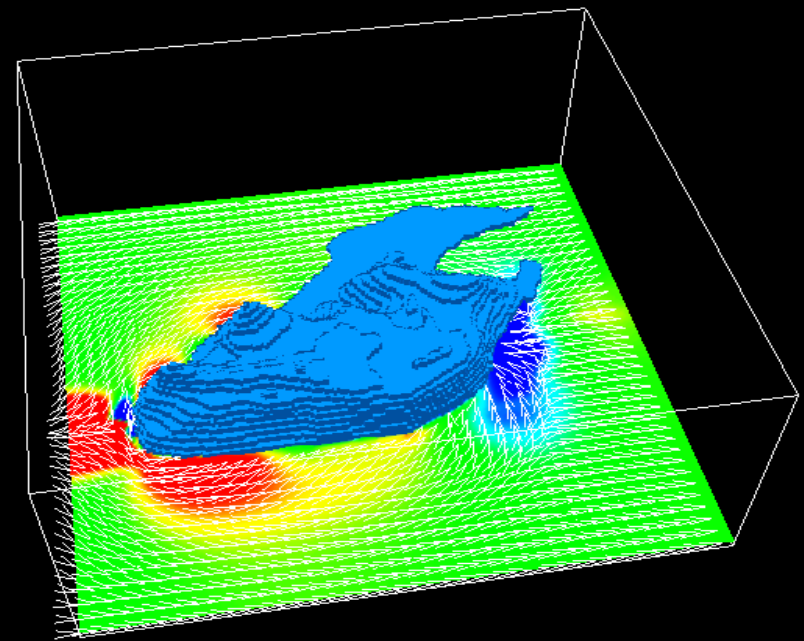


前回の発表では(1)、、、

市街地のテスト計算

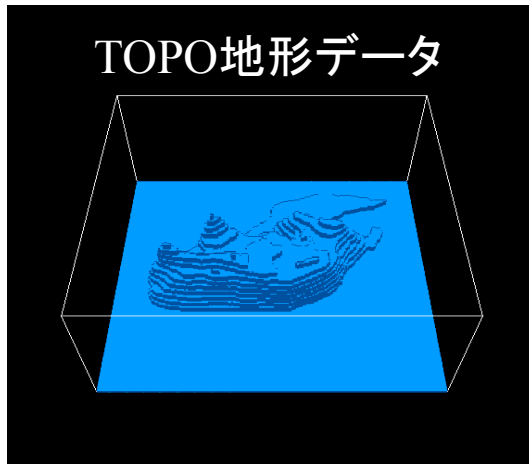


実地形のテスト計算



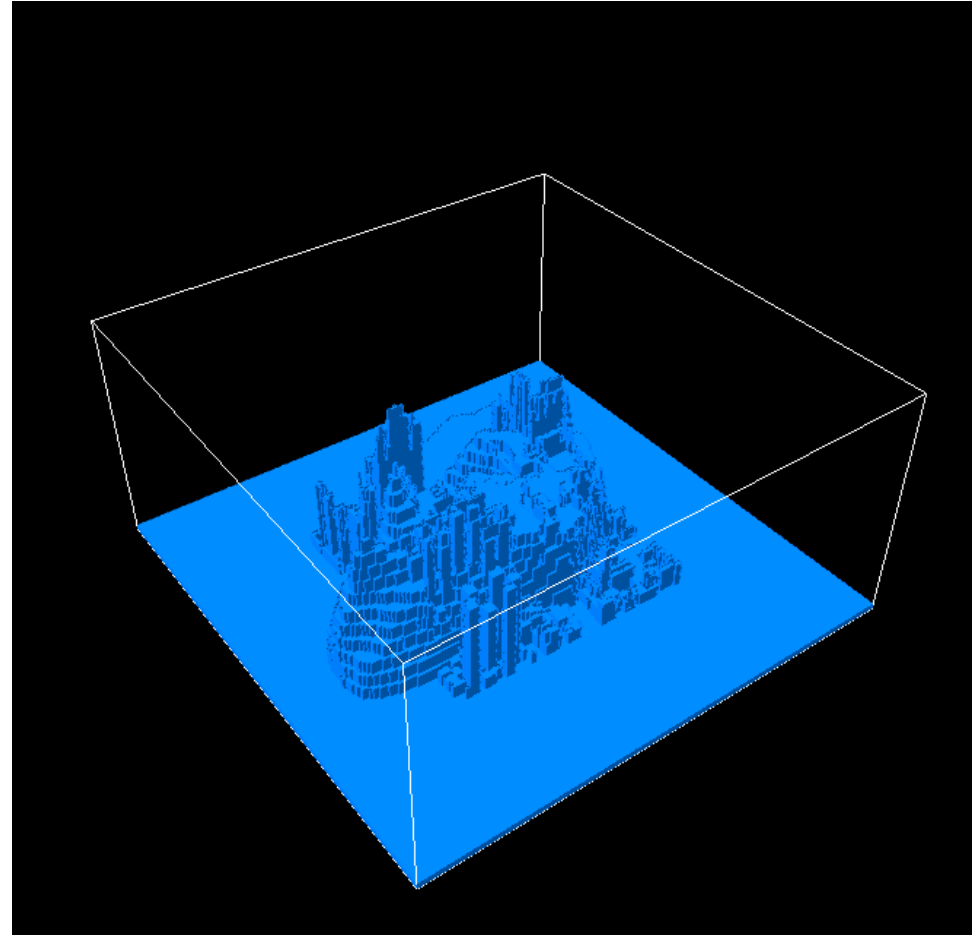
前回の発表では(2)、..、

どうなるの？

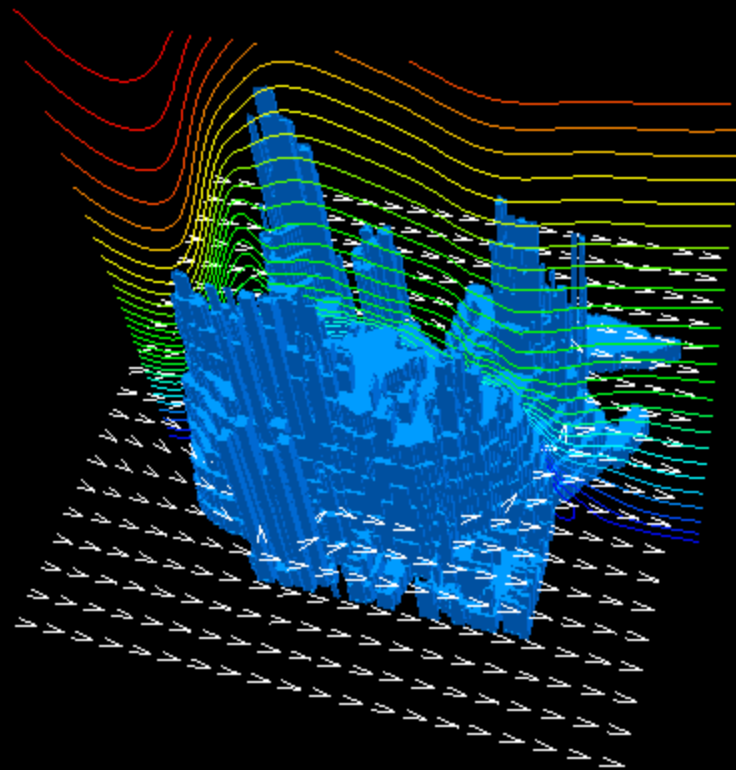


+

=>



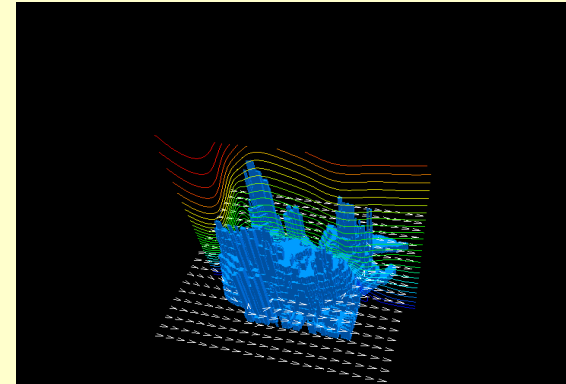
原則的にできることを確認！



In the next work:

✕ First step: *model framework completion*

*NHM、SIMPLERgoの
モデル間インタフェースの確立



Second step: *accomplished with
the data assimilation and
assemble prediction methods*